

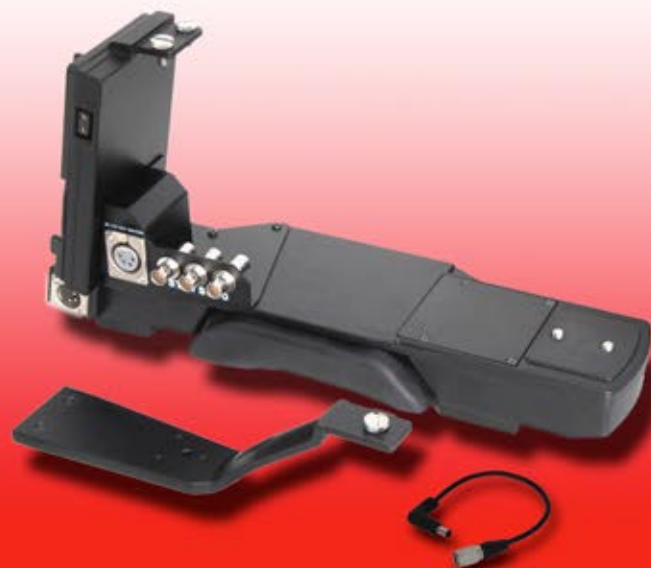
ST-7S300

Shoulder Mount for Sony PMW-300

PROTECH®

The Protech shoulder adaptor ST-7S300 is exclusively designed for the Sony PMW-300 camcorder. The PMW-300 has an interchangeable lens, unique VF attachment and auto functions and is designed for easy shooting.

To fully utilise these features, the ST-7S300 increases the flexibility of the PMW-300. With its Sony original shoulder pad and V-Mount battery plate, the ST-7S300 truly replicates the feel of a full size shoulder mount camera.



Combining Comfort and Simplicity

Perfect weight balance on the shoulder can be established easily. The soft shoulder pad gives comfort during long shooting periods.

The light and strong aluminium die-cast body is designed to fit perfectly with the compact shape of the PMW-300.

Features Overview

- Stable and secure operation of the PMW-300, replicates feel of true ENG style camera
- Rubberised professional camera shoulder pad, moulds to any shoulder for added comfort.
- Built-in V-Mount plate with D-Tap for long and simple power management
- Built-in 4-pin XLR 12VDC for AC adaptor operation
- Integrated tripod plate mount, compatible with standard Sony VCT-14

Versatile Connections

4-pin XLR in and output connectors are available to provide power to the camera and accessories, such as lights or external recorders with an AC adaptor. An industry standard D-Tap output is also provided.

3x BNC connectors allow for quick and secure connection of video cables.

Specifications

- Dimensions: 105 x 246 x 345 mm (WxHxL) (Approx)
- Weight: 1.4Kg
- Inputs/Outputs:
 - DC in 12V XLR 4-pin (Male) x1
 - V-Mount (Li-ion Battery Input) x1
 - DC out 12V XLR 4-pin (Female) x1
 - DC out 12V D-Tap (Female) x1
 - DC out 12/8.4V Hirose 4-pin (Female) x1
 - Extension Terminal BNC-BNC x3

